

# BACCHIMETER®

VINITECH  
SIFEL

2016  
TROPHÉE  
BRONZE

## A real time and non-destructive assessment of grape maturity

The analysis of **phenolic ripeness** through the **anthocyanins** corresponds to the monitoring of their accumulation and concentration in the grape skin.

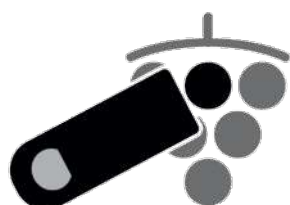
The spatial variation of the anthocyanins rate within the grapes of one plot shows ripeness differences, and its assessment makes possible the identification of homogeneous zones. This knowledge is the basis for an immediate decision-making. The temporal monitoring of anthocyanins makes possible to help to determine the harvest date.



*Bacchimeter® sensor*

## Bacchimeter® : A connected sensor to measure the true ripeness.

Bacchimeter® is a connected portable sensor that measures the anthocyanins in the grape skin, directly at the plot, in a georeferenced and non-destructive way. You can read the results in real time on your smartphone or on our web platform.



1

Measurement of anthocyanins with Bacchimeter®



2

Data transfer and visualisation on mobile app in real time.



3

Analysis, visualisation and data storage on :

[Analytics.force-a.com](https://analytics.force-a.com)

# BACCHIMETER®

VINITECH  
SIFEL

2018  
TROPHÉE  
BRONZE

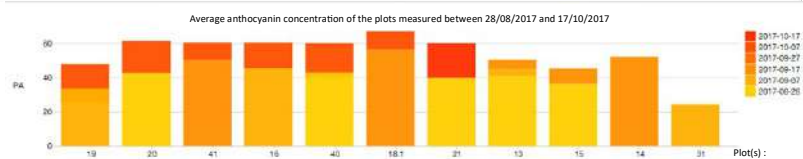
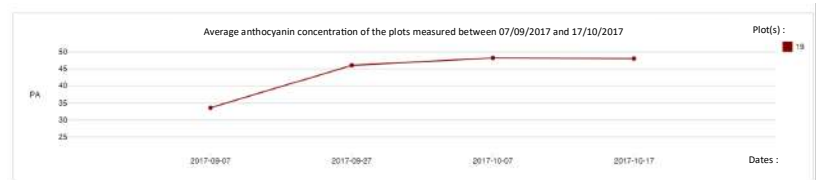
Thanks to Bacchimeter®, the monitoring of the phenolic ripeness is possible:

## I- Temporarily:

- Kinetic monitoring of the anthocyanins accumulation.
- Inter-plot comparison

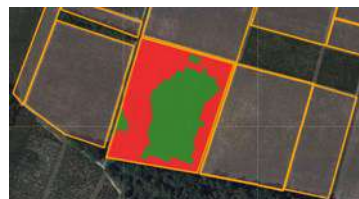
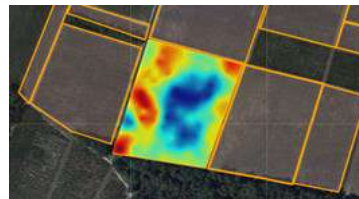
### In practice :

Sampling : 60 measurements/Plot  
Acquisition time : 10 min/plot



## II- Spatially :

- Rainbow map: Visualisation of «anthocyanin-rich zones
- Zoned map : Thresholds modulation to customise the plot selection.



### In practice :

Sampling : 600 measurements/ha  
Acquisition time : 1 h/ha

A qualitative and quantitative vision of the vineyard

## Our services available through annual subscription

- **Standard subscription** (kinetics + inter-plot comparison):
  - Monitoring of anthocyanins accumulation over time, to help to determine the best harvesting date.
  - Harvest organisation, according to the plot precocity.
  - Assessment of yearly the plot behaviour according to the millesime.
- **Premium subscription** (standard subscription + Mapping):
  - Quick identification of homogeneous zones in anthocyanins in one plot for selective harvesting
  - Support in berries testing.
  - Assessment of yearly the plot behaviour according to the millesime.